

SENSE & SENSIBILITY

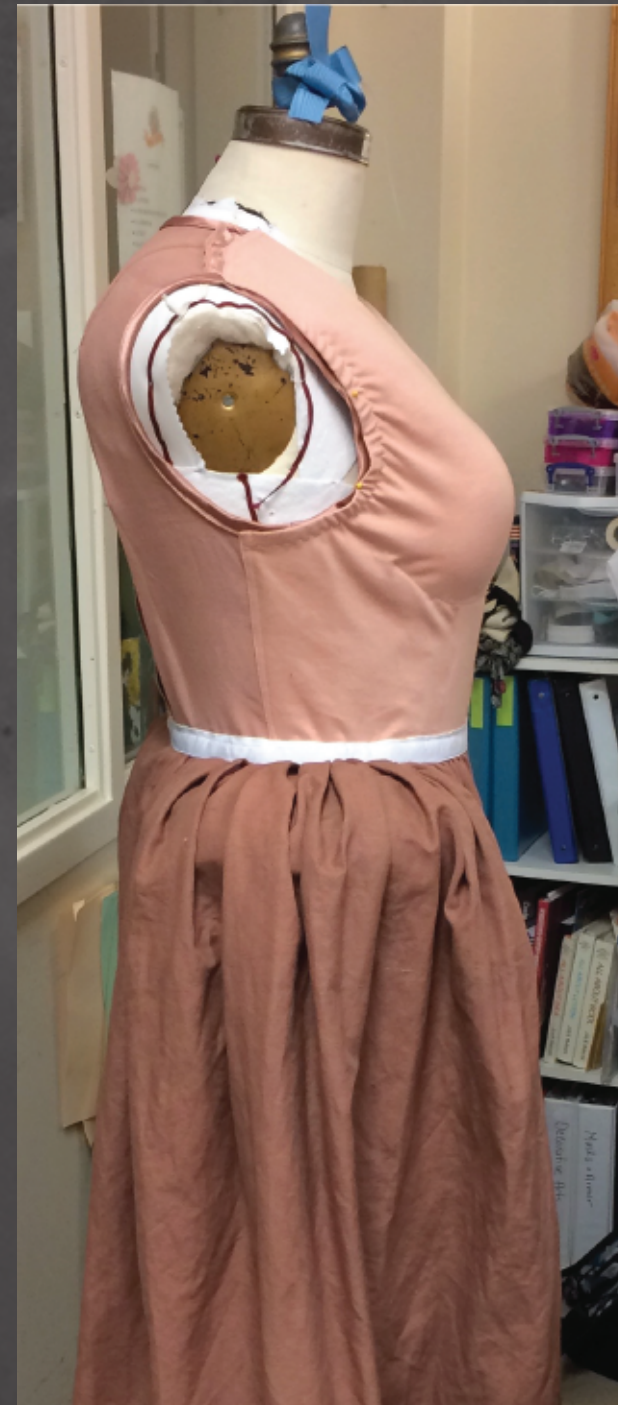
PlayMakers Repertory Company: 2017

Ray Dooley as Mrs. Jennings Foundation

Designer: Olivera Gajic
Position: Draper

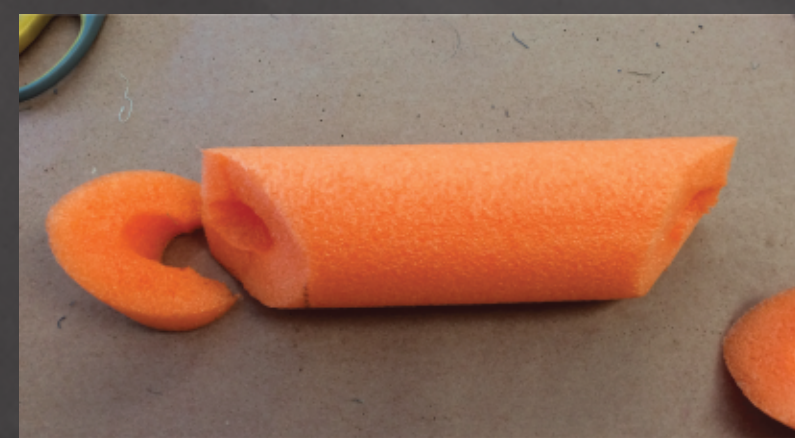
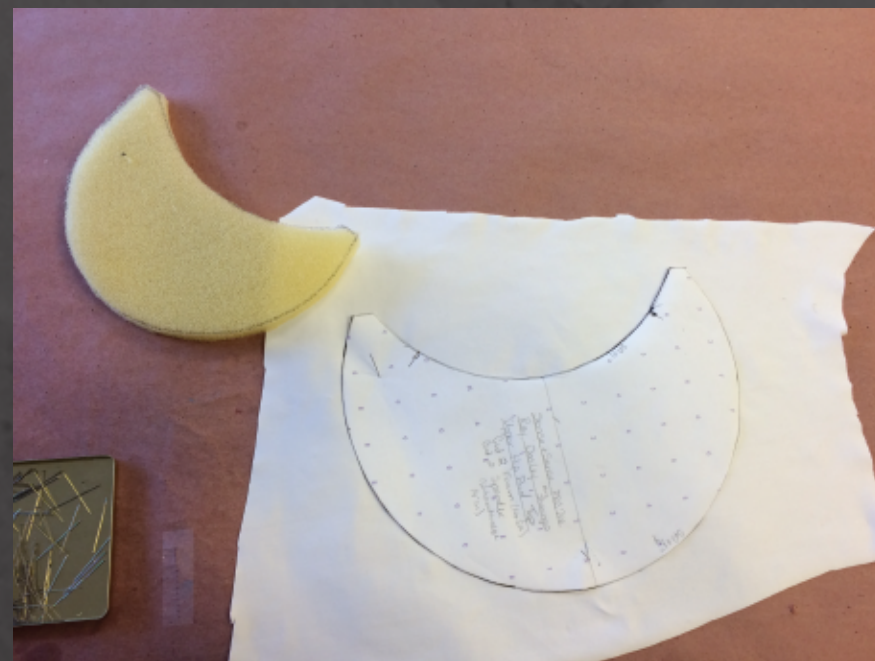


Due to Mrs. Jennings being played by a male actor Olivera wanted to have a D cup; I padded up a form for her first visit so we could talk about body shape and style lines. From this meeting it was decided to lower the chest and enlarge the hips just a little.



In order to assist wardrobe the breasts and foam eggs in the base are removable through the opening in the front armhole. Hip pads are also removable with snaps and a zipper. When the pads are removed the base is easily machine wash and dried.

The ruffle was attached from the inside of the base to hide the edge of the base as it wraps around to lay on top of the collar. It also snaps on and off to assist wardrobe with cleaning.



I created hip pads for Mrs. Jennings using pod body construction techniques. I decided to use foam so that they would dry faster when machine washed and wouldn't change shape. The foam was not full enough all by itself so I shaved down a pool noodle to fill the space and keep the hips lightweight.

